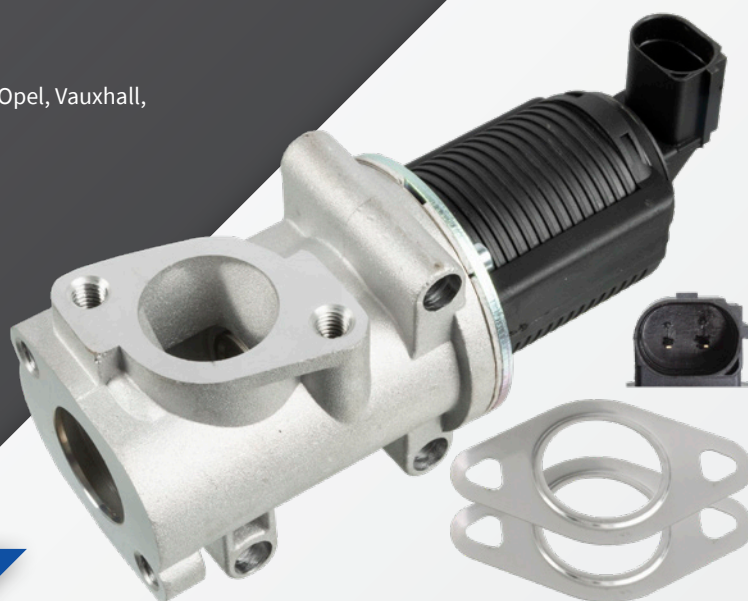


# SWAG 40 94 5157

**SWAG**<sup>®</sup>**To fit:**

various Alfa Romeo, Fiat, Opel, Vauxhall,  
Saab and Suzuki models

Engine: 1.9 diesel



## EGR valve with gaskets

### Problem

- The engine is not running smoothly.
- Lack of power.
- The engine idle is irregular.
- The engine idle is low.

The engine warning lamp is illuminated - related to the symptoms listed above.  
These possible fault codes may be stored in the engine ECU:

P0401 EGR Solenoid valve stuck in the closed position.

P0402 EGR Solenoid valve stuck open.

### Cause

These issues may be a result of excess carbon deposits, causing the EGR valve to stick.

### Solution

Remove the EGR valve, inspect it for excess carbon deposits and replace if necessary. Once the new part has been fitted, confirm the EGR system is functioning correctly.

With the engine at a normal operating temperature, use a suitable diagnostic tool to check that there are no fault codes present. Then, select the Mass Air Flow (MAF) and Exhaust Gas Recirculation (EGR) valve position from the data list.

When the engine is at idle - with the EGR valve closed - the MAF should read 400-600mg/str. With all electrical loads turned off and the accelerator depressed several times, the MAF parameter should react quickly.

With the engine at idle and the EGR valve open, the MAF should read 150-400mg/str.

For more technical information please visit: [partsfinder.bilsteingroup.com](https://partsfinder.bilsteingroup.com)

EN