



professional

Water pump

fits

Citroen C1 1.0 (ref. no. 1201.L3, 1201.J0)
Daihatsu Cuore VIII 1.0 / Sirion 1.0 (ref. no. 16100-80001)
Peugeot 107 1.0 (ref. no. 1201.L3, 1201.J0)
Subaru Justy 1.0 (ref. no. 16100-80003)
Toyota Aygo 1.0 / Yaris 1.0 (ref. no. 16100-09530)



PROBLEM

The water pump leaks.

CAUSE

The water pump fitted by the vehicle manufacturer can leak, because the material used is perforated steel sheet (1). In the worst case, this can lead to significant engine damage.

SOLUTION

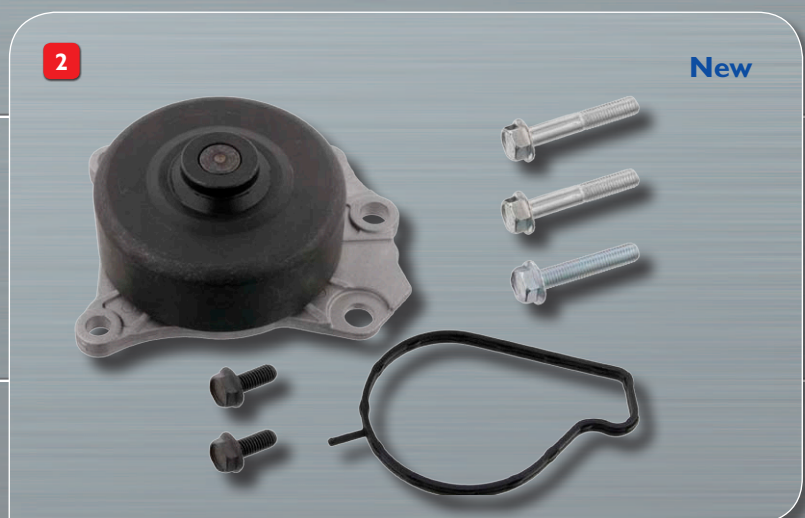
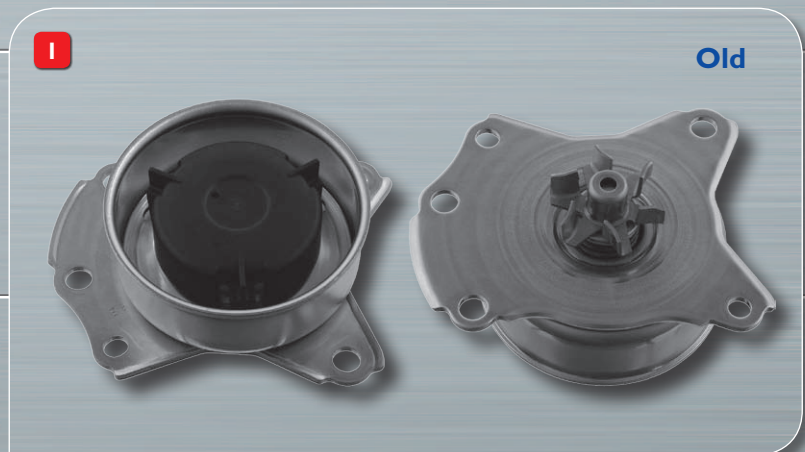
SWAG recommends using water pump SWAG no. 32682. This modified version of the water pump is manufactured from aluminium die casting. This makes the pump significantly stronger, and prevents leakage. Additionally, SWAG supplies water pump 32682 including the required gasket and suitable bolt set (2).

FITTING TIP

When fitting the new version SWAG 32682, please use bolts supplied with water pump. Torque setting for bolts is 28 Nm. The vehicle manufacturer's specifications should always be followed!

ATTENTION

Both old and new versions are still available in the aftermarket; however the new version does not contain the required bolts!



SWAG no. 81 93 2682