

Differences between model HX40V and HY40V

Introduction:

The vehicle manufacturer Iveco had performed approximately in 2002 engineering modifications to the engine and turbocharger. The software of the engine control unit has been modified and exhaust components, as well as the intake lines changed.

Notes:

The refitting of turbocharger model series **HX** on model series HY, or HE may be carried out only by a IVECO specialist workshop. The engine control unit must be reprogrammed and it has to be installed modified components of the exhaust and intake system to build in.

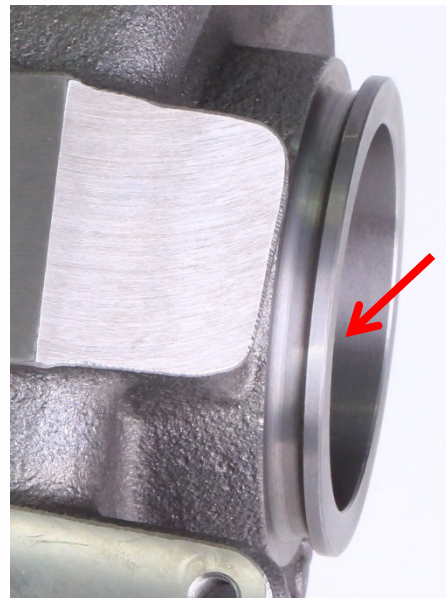
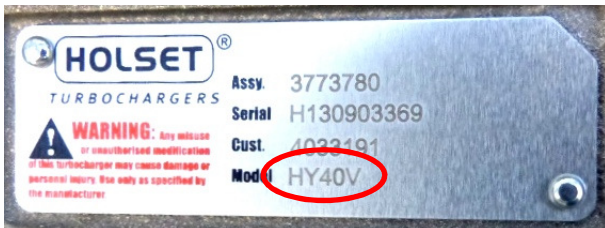
Insofar in your vehicle a turbocharger model series HY40V has already been installed, the delivered turbocharger can be replaced directly. A programming of the controller is not required.

Distinguishing features of HX40V and HY40V chargers:

The obsolete HX series has a flat screwed flange on the turbine output.

(No picture)

In the latest HY-series exhaust system with V-band clamp is mounted on a conical seating.



Vehicle Manufacturer: IVECO

Engine code: CURSOR 8 / 10

Validity: This service information is valid for renewing the turbocharger with

Manufacturer part no.: T911363, T914084

Please note: OE-references are only for means of comparison. The content of this Service Information is non-binding and is only for informational purposes. The manufacturer specifications have to be adhered to.