

SERVICE-INFO



Assembly instructions for wheel bearing kit 713 6448 00

Manufacturer: Chevrolet, Daewoo
Models: Aveo, Kalos
Version: With/without ABS
Item no.: 713 6448 00

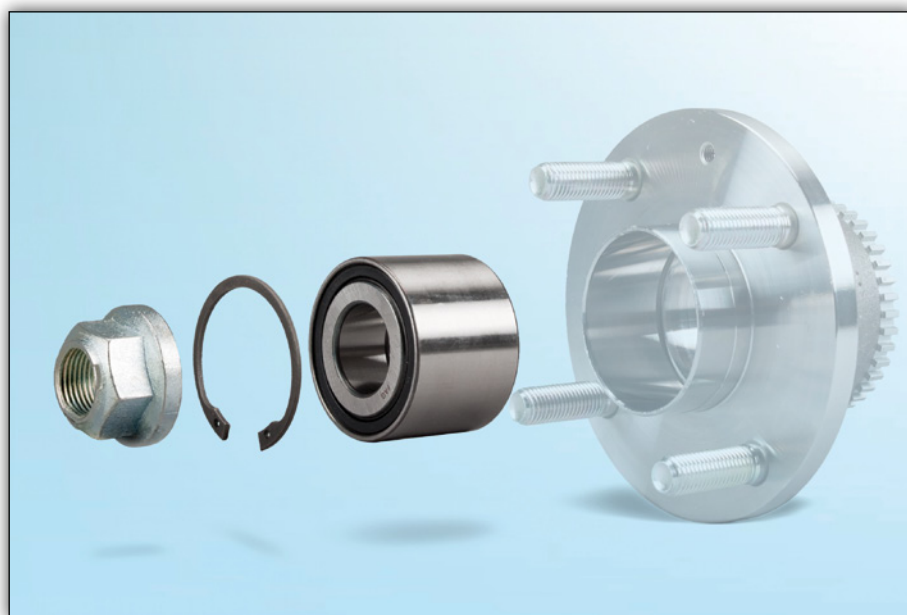


Image 1: The FAG wheel bearing kit 713 6448 00 as a repair solution — the wheel hub must not be replaced

For the specified models, the wheel bearing on the rear axle is only available as a complete unit from the vehicle manufacturer (wheel hub with integrated wheel bearing).

With immediate effect, Schaeffler Automotive Aftermarket is offering a repair solution that allows the wheel bearing to be replaced separately.

Parts are removed and installed using conventional workshop equipment.

Note:

The wheel bearing must be pressed into the hub using the outer race!

The FAG wheel bearing kit with article number 713 6448 00 can be fitted on wheel hubs with or without ABS. The kit includes the wheel bearing, retaining circlip and fastening nut.



Note the specifications of the vehicle manufacturer!

Appropriate spare parts can be found in our on-line catalogue at www.Schaeffler-Aftermarket.com or in RepXpert at www.RepXpert.com.

Issued 05.2011

FAG 0020

Technical subject to change

© 2011 Schaeffler Automotive Aftermarket

Any reference to replacement part numbers for vehicle manufacturers is for comparison purposes only.

For further information:

Phone: +44 (0) 14 32 264 264*

Fax: +44 (0) 14 32 375 760

Info@LuK-AS.co.uk

www.Schaeffler-Aftermarket.com

* Calls from within the UK 08457 001100

FAG