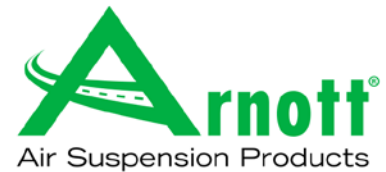


Installation Manual

A-2464 ARNOTT FRONT RIGHT AIR SPRING FOR 2000-2006 BMW X5



Congratulations on your purchase of an Arnett® air suspension product. We at Arnett Incorporated are proud to offer a high quality product at the industry's most competitive pricing. Thank you for your confidence in us and our product.

Proper installation is essential to experience and appreciate the benefits of this system. Please take a moment to review these installation instructions before you begin to install these components on your vehicle. The removal and installation of air suspension products should only be performed by a fully qualified, ASE Certified, professional.

It is equally important to be aware of all necessary safety measures while installing your new Air Suspension System. This includes proper lifting and immobilizing of the vehicle and isolation of any stored energy to prevent personal injury or property damage.

"Engineered to Ride, Built to Last®"



WARNING: *The air suspension system is under pressure (up to 10 bar, or 150 lbf/in). Verify pressure has been relieved and disconnect power to the air suspension system prior to disassembly. Do not allow dirt or grease to enter the system. Always wear standard hand, ear, and eye protection when servicing the air suspension system.*

KIT CONTAINS:

PARTS LIST

P/N	QTY	DESCRIPTION
21-4452	1	ARNOTT FRONT RIGHT AIR SPRING
21-5013	1	ACCESSORY KIT

Arnett® is committed to the quality of its products. If you have a question or problem with any Arnett product, please contact Arnett by calling **800-251-8993** during normal business hours or email techassistance@arnottinc.com.

GENERAL INFORMATION:

Reading this manual signifies your agreement to the terms of the general release, waiver of liability, and hold harmless agreement, the full text of which is available at www.arnottinc.com.

- Not to be stored below 5°F (-15°C) or above 122°F (50°C).
- Avoid damage to air lines and cables.
- Removal and installation is only to be performed by fully qualified personnel.
- Use car manufacturer's diagnostic software.

CAUTION: *Damage to the vehicle and air suspension system can be incurred if work is carried out in a manner other than specified in the instructions or in a different sequence.*



To avoid the possibility of short circuits while working with electric components consult your owner's manual on how to disconnect your battery.



Consult your vehicle owner's manual, service manual, or car dealer for the correct jacking points on your vehicle and for additional care, safety and maintenance instructions. Under no circumstances should any work be completed underneath the vehicle if it is not adequately supported, as serious injuries and death can occur.

AIR SHOCK REMOVAL

1. SET STEERING TO STRAIGHT AHEAD.
2. RAISE VEHICLE.
3. REMOVE FRONT WHEEL.
4. REMOVE SHOCK ASSEMBLY PER MANUFACTURER'S SPECIFICATION (RETAIN LOWER SHOCK MOUNTING HARDWARE FOR RE-INSTALLATION). (FIGURE A)



FIGURE A

AIR SPRING DISASSEMBLY/ASSEMBLY

1. REMOVE THE M14X1.5MM LOCK-NUT, TOP WASHER AND TOP SEALING WASHER FROM THE TOP OF THE SHOCK, DISCARD TOP SEALING WASHER. (FIGURE B)

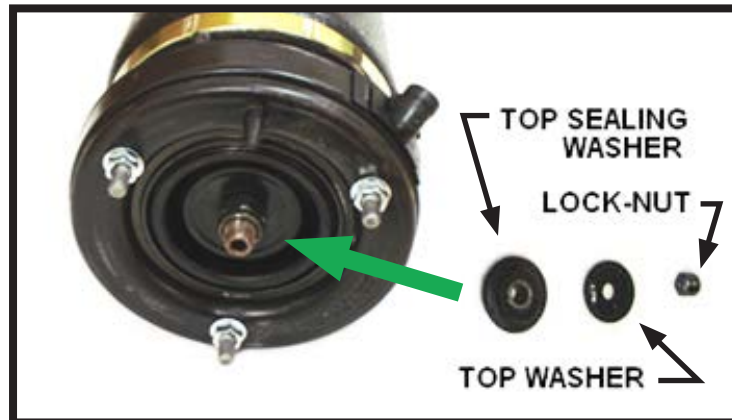


FIGURE B

2. REMOVE THE PLASTIC RETAINING PIN AT THE BOTTOM OF THE AIR SLEEVE ASSEMBLY. SAVE THE PLASTIC RETAINING PIN FOR AIR SPRING INSTALLATION. (FIGURE C)

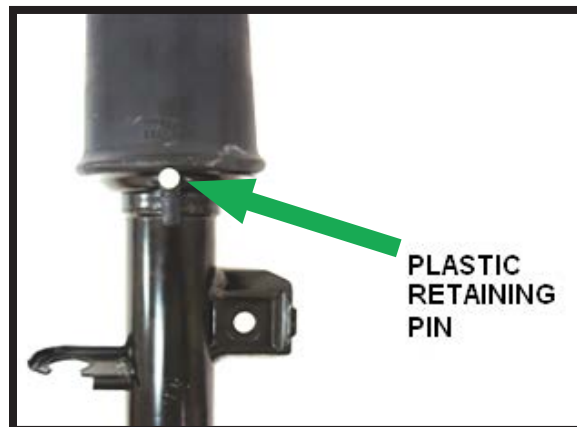


FIGURE C

3. REMOVE THE AIR SLEEVE ASSEMBLY FROM THE TOP OF THE SHOCK SHAFT AND DISCARD. NOTE THE ORIENTATION OF THE ALIGNMENT PIN TO THE SHOCK BEFORE REMOVAL. (FIGURE D)

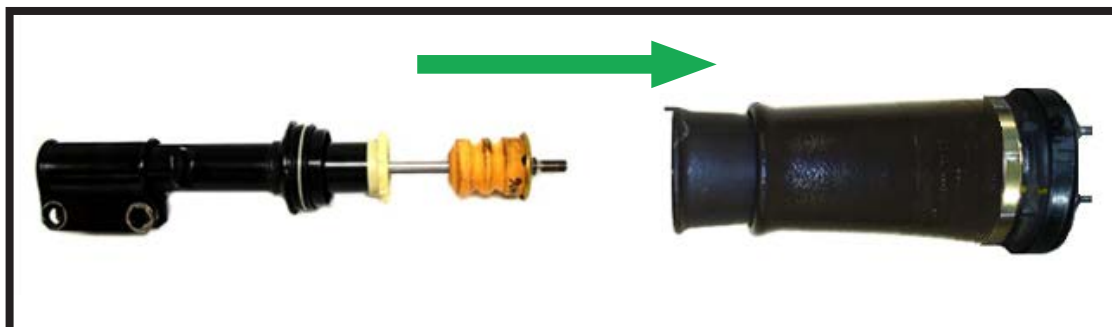


FIGURE D

4. REMOVE THE TWO (2) O-RINGS AND TWO (2) BACK-UP RINGS FROM THE TOP OF THE SHOCK SHAFT AND DISCARD. (FIGURE E)

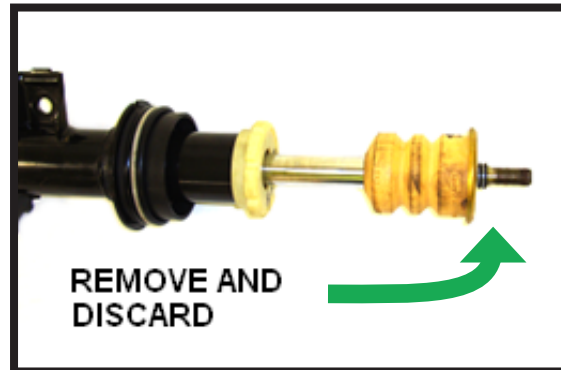


FIGURE E

5. INSTALL THE NEW ARNOTT[®] AIR SLEEVE ASSEMBLY ONTO SHOCK WITH THE ALIGNMENT PIN IN THE SAME ORIENTATION AS THE OLD AIR SPRING. APPLY A SILICONE BASE LUBRICANT ON THE LOWER O-RINGS PRIOR TO INSTALLING AIR SLEEVE ASSEMBLY. (FIGURE F)

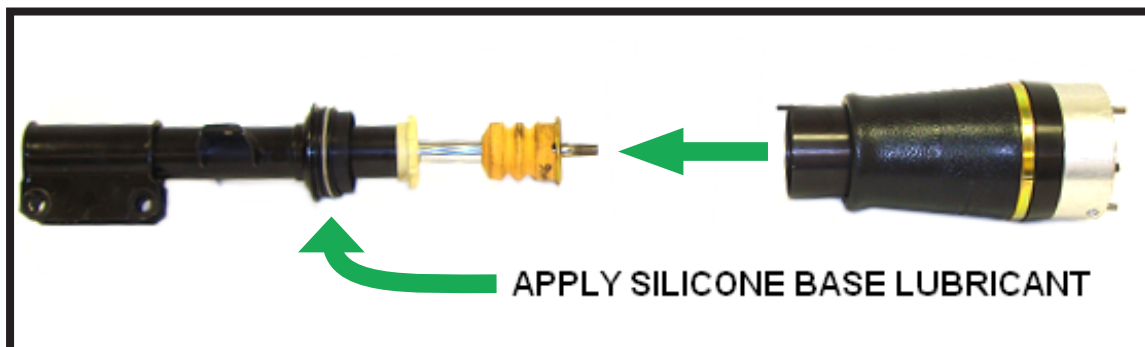


FIGURE F

6. SLIDE AIR SLEEVE ASSEMBLY ONTO THE SHOCK UNTIL LOWER PISTON SEATS ONTO THE 2 (TWO) LOWER O-RINGS. ALIGN THE HOLE IN THE ALIGNMENT TAB ON THE PISTON WITH THE HOLE ON THE SHOCK, REINSTALL THE PLASTIC RETAINING PIN. FAILURE TO DO SO MAY CAUSE THE AIR SLEEVE ASSEMBLY TO NOT SEAL OR INFLATE. (FIGURE G)

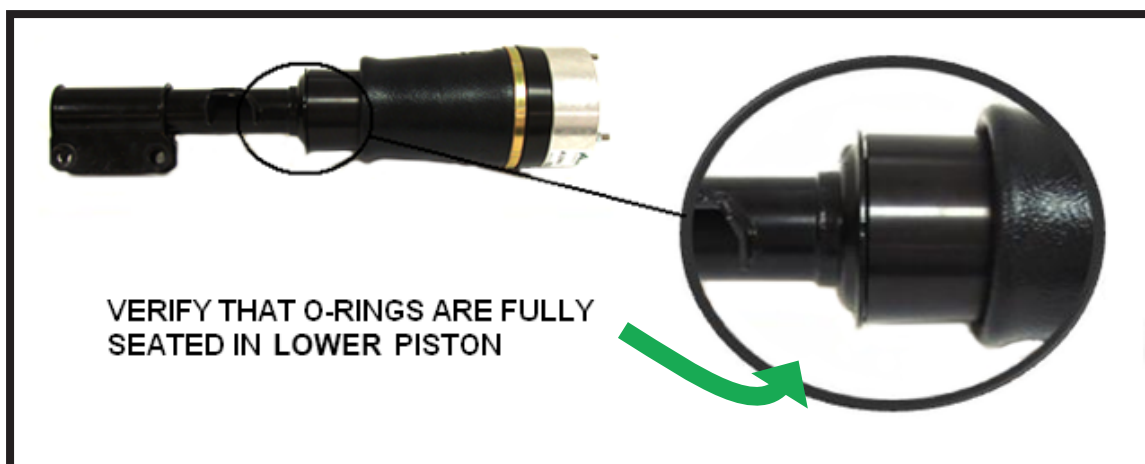



FIGURE G

 *When installing the top sealing washer make sure that the lip on the inside diameter (smaller) is facing out. Improper installation can cause damage to the shock assembly and void warranty*

7. INSTALL TOP SEALING WASHER, TOP WASHER AND LOCK-NUT. TORQUE LOCK-NUT. (FIGURE H)

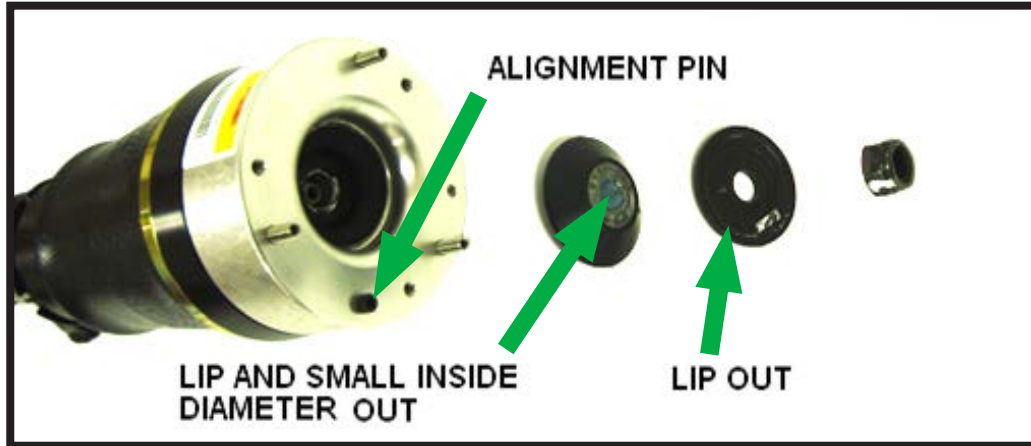



FIGURE H

8. DISASSEMBLY/ASSEMBLY COMPLETE.

AIR SHOCK INSTALLATION

 *Tighten all nuts and bolts to manufacturer's specifications during the installation process.*

1. REMOVE THE 3 (THREE) NUTS ON THE TOP MOUNT OF THE SHOCK ASSEMBLY.
2. INSTALL SHOCK INTO WHEEL WELL AND CONNECT AIRLINE.
3. INSTALL THE NEW SHOCK ASSEMBLY INTO THE UPPER AND LOWER SHOCK MOUNTS.
4. TIGHTEN THE TOP 3 (THREE) NUTS AND THE LOWER 2 (TWO) BOLTS/NUTS TO THE MANUFACTURER'S SPECIFICATION.
5. RE-INSTALL BRAKE LINE INTO SHOCK BRACKET.
6. INSTALL WHEEL, TIGHTEN LUG NUTS TO MANUFACTURER'S SPECIFICATION.
7. INSTALLATION COMPLETE.