

Installation Manual

AS-3429
ARNOTT
NEW REAR AIR STRUT
2015-2019 CADILLAC/CHEVY/GMC SUV'S - SWB
(K2UC/UG)/LWB(K2YC/YG/2XL)
W/MAGNERIDE - L/R



Congratulations on your purchase of an Arnett® air suspension product. We at Arnett Incorporated are proud to offer a high quality product at the industry's most competitive pricing. Thank you for your confidence in us and our product.

Proper installation is essential to experience and appreciate the benefits of this system. Please take a moment to review these installation instructions before you begin to install these components on your vehicle. The removal and installation of air suspension products should only be performed by a fully qualified, ASE Certified, professional.

It is equally important to be aware of all necessary safety measures while installing your new Air Suspension System. This includes proper lifting and immobilizing of the vehicle and isolation of any stored energy to prevent personal injury or property damage.

"Engineered to Ride, Built to Last®"



WARNING: *The air suspension system is under pressure (up to 10 bar, or 150 lbf/in). Verify pressure has been relieved and disconnect power to the air suspension system prior to disassembly. Do not allow dirt or grease to enter the system. Always wear standard hand, ear, and eye protection when servicing the air suspension system.*

Arnett® is committed to the quality of its products. If you have a question or problem with any Arnett product, please contact Arnett by calling 800-251-8993 during normal business hours or email techassistance@arnottinc.com. (In the EU please call +31 (0)73 7850 580 or email info@arnotteurope.com)

GENERAL INFORMATION:

Reading this manual signifies your agreement to the terms of the general release, waiver of liability, and hold harmless agreement, the full text of which is available at www.arnottinc.com.

- Not to be stored below 5°F (-15°C) or above 122°F (50°C).
- Avoid damage to air lines and cables.
- Removal and installation is only to be performed by fully qualified personnel.
- Use car manufacturer's diagnostic software.

CAUTION: Damage to the vehicle and air suspension system can be incurred if work is carried out in a manner other than specified in the instructions or in a different sequence.



To avoid the possibility of short circuits while working with electric components consult your owner's manual on how to disconnect your battery.



Consult your vehicle owner's manual, service manual, or car dealer for the correct jacking points on your vehicle and for additional care, safety and maintenance instructions. Under no circumstances should any work be completed underneath the vehicle if it is not adequately supported, as serious injuries and death can occur.

DISCLAIMER:

THE PRODUCT SHOWN IN THE INSTALLATION STEPS BELOW MAY LOOK DIFFERENT THAN THE PART YOU ARE INSTALLING. THE INSTALLATION STEPS ARE THE SAME AND ALL NOTICES AND WARNINGS SHOULD BE ADHERED TO IN THE SAME MANNER.

AIR STRUT REMOVAL

1. SET STEERING TO STRAIGHT AHEAD.
2. LIFT VEHICLE AND REMOVE REAR WHEEL AND WHEEL WELL LINER. (FIGURE 1)



FIGURE 1

3. LOCATE AND REMOVE THE AIR LINE TO DEFLATE THE AIR STRUT. TURN THE METAL CLIP APPROX. 90° TO REMOVE THE AIR LINE FITTING FROM THE AIR STRUT. (FIGURE 2)



FIGURE 2

4. LOCATE AND REMOVE THE ELECTRICAL CONNECTION FROM THE TOP OF THE AIR STRUT. DETACH THE STRUT CONNECTION FROM THE CLIP ON THE VEHICLE. (FIGURE 3)



FIGURE 3

5. LOOSEN AND REMOVE THE UPPER AND LOWER STRUT MOUNTING NUTS. (FIGURE 4)

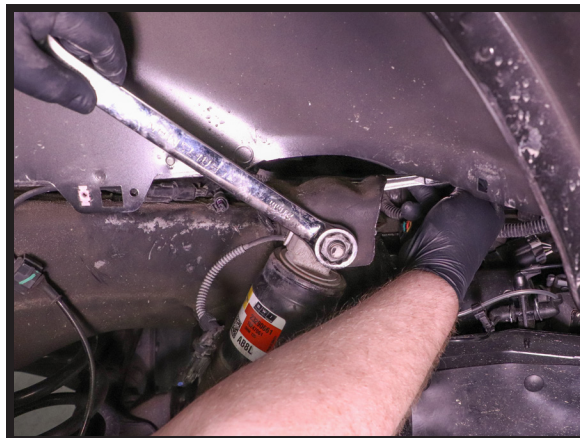


FIGURE 4

6. SUPPORT THE AXLE TO RELIEVE PRESSURE FROM THE AIR STRUT'S MOUNTING POINTS. REMOVE THE UPPER AND LOWER AIR STRUT MOUNTING BOLTS. (FIGURES 5, 6)



FIGURE 5



FIGURE 6

7. REMOVE THE AIR STRUT FROM THE VEHICLE. (FIGURE 7)



FIGURE 7

8. REMOVAL COMPLETE.

AIR STRUT INSTALLATION



Tighten all nuts and bolts to manufacturer's specifications during the installation process.

1. REMOVE THE YELLOW SHIPPING CAP AND INSTALL THE NEW ARNOTT AIR STRUT. (FIGURES 8, 9)

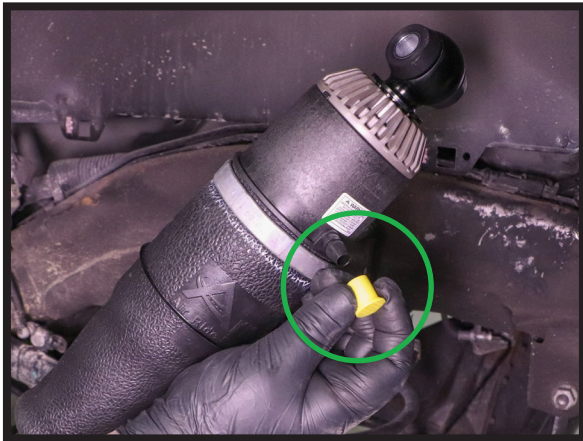


FIGURE 8

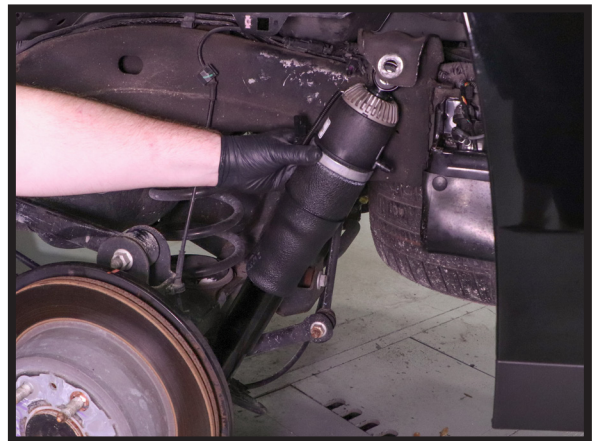


FIGURE 9

2. INSTALL THE LOWER STRUT MOUNTING BOLTS AND NUTS AND TIGHTEN TO MANUFACTURER'S SPECIFICATIONS. (FIGURES 10, 11)



FIGURE 10



FIGURE 11

3. INSTALL THE UPPER STRUT MOUNTING BOLTS AND NUTS AND TIGHTEN TO MANUFACTURER'S SPECIFICATIONS. (FIGURES 12, 13)



FIGURE 12

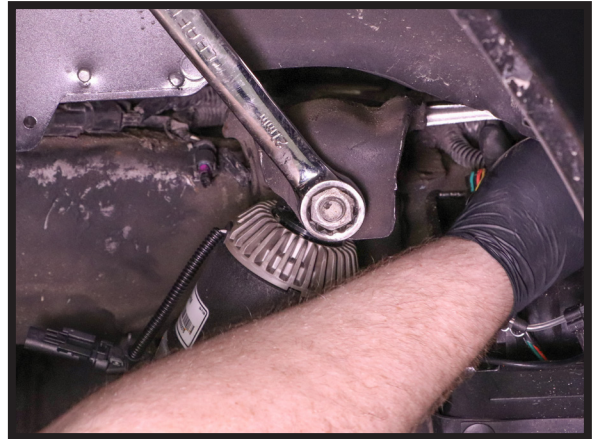


FIGURE 13

4. INSTALL THE ELECTRICAL CONNECTION AND CLIP TO VEHICLE. INSTALL THE AIR HOSE CONNECTION. (FIGURES 14, 15)



FIGURE 14

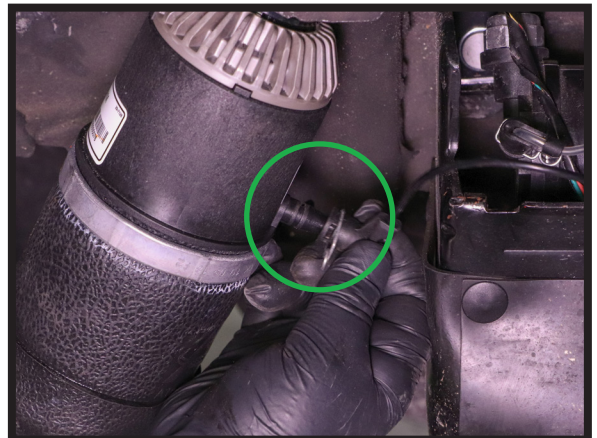


FIGURE 15

5. INSTALL WHEEL WELL LINER.
6. INSTALL WHEEL.
7. LOWER VEHICLE.
8. INSTALLATION COMPLETE.