

STARTERS & ALTERNATORS

DELCO REMY

The Delco Remy brand represents the industry's leading choice for **heavy duty starters & alternators** with **trusted, knowledgeable support** to back it. From **off highway heavy equipment** to **long haul trucks** to to back it up **school bus** and **transit applications**, Delco Remy starters and alternators are designed to perform in the toughest conditions.

OE EXPERTISE

Largest OE market share,
#1 in North America

Higher market share than
#2 and #3 combined

LEADING COVERAGE

Cover 75 truck, bus & engine
manufacturers including the top 7...

DAF, IVECO, MAN, MERCEDES,
RENAULT, SCANIA & VOLVO

WORKSHOP SOLUTIONS

From diagnostics to tech support...
... **We've got your back!**

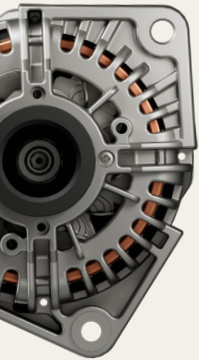
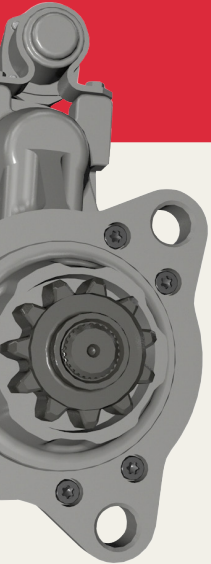
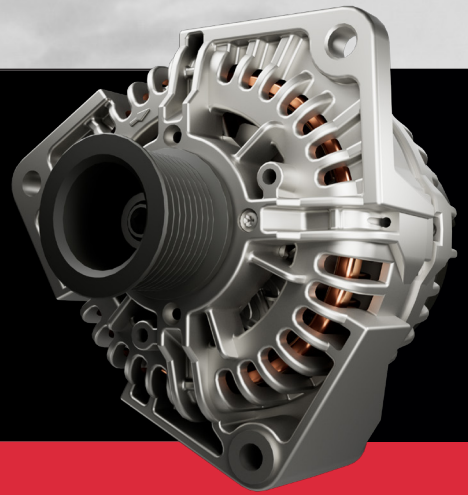


DELCOREMY.COM

DELCO REMY is a registered trademark of General Motors LLC, licensed to PHINIA Technologies Inc.



STARTERS & ALTERNATORS



STARTERS

EUROPEAN STARTERS

M90 | M105 | KB | JF | M85 | R5 | JE

STRAIGHT DRIVE STARTER™

37MT | 41MT | 42MT | 50MT

CATERPILLAR 245 | 825 | 826 | 834 | 844

FORD F650 | F750

MERCEDES Atego

PETERBILT 367 | 567 | 579 | 587

GEAR REDUCTION STARTERS

29MT™ | 31MT™ | 35MT™ | 38MT™ |

38MT+™ | 39MT™

ALTERNATORS

FREIGHTLINER Argosy | Columbia

HYUNDAI R200

JCB 426 | 434 | 436 | 467

MERCEDES Actros

VOLVO ACL

BRUSHLESS ALTERNATOR

23SI™ | 33SI™ | 34SI™ | 35SI™ | 36SI™

38SI™ | 40SI™ | 55SI™

BRUSH ALTERNATOR

22SI™ | 24SI™ | 28SI™

EUROPEAN ALTERNATORS

NCB | MELCO | N1 | T1

Delco Remy branded product backed by **technical support** and **over 125 years of knowledge, experience and quality**

400 OE SKU's for **US Off Highway** applications in Europe and Middle East covering your needs

CV heavy duty all makes product engineered to the same **quality, reliability and performance** as the OE

European warehousing ensuring **fast deliveries ... get the product you need, when you need it!**

Pan-European pricing delivering consistent and competitive pricing to distributors



DELCOREMY.COM

DELCO REMY is a registered trademark of General Motors LLC, licensed to PHINIA Technologies Inc.

