

# Transmission Repair Parts for Mercedes.

G211-12 G281-12 G330-12

01.02.2022



# CHART 01

## Front Cover & Clutch Housing

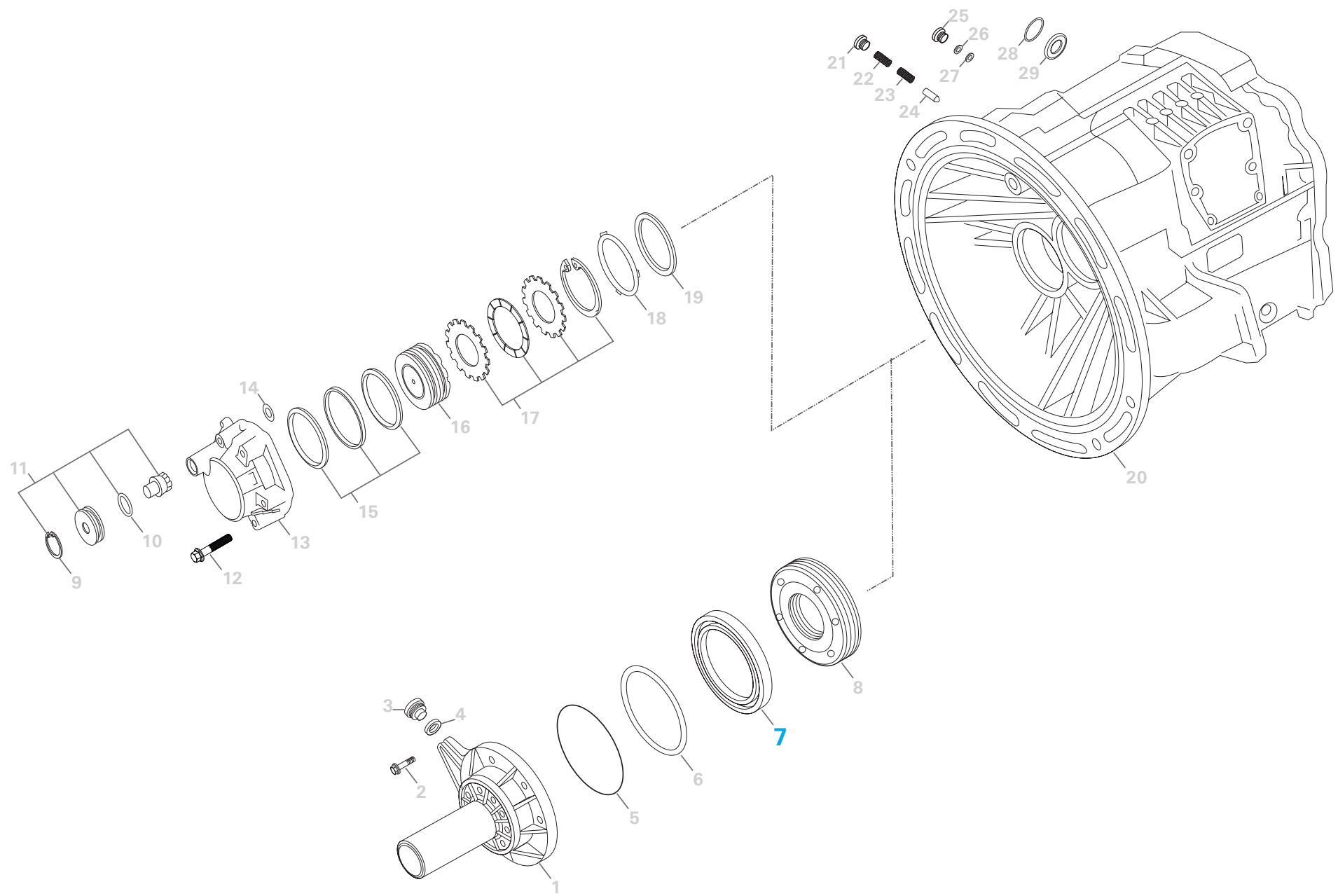


FIG.	G211-12	G281-12	G330-12	ZF	Mercedes*	Description	Qty	Notes
7				<b>0073.298.069</b>	<b>019 997 0547</b>	Repair Kit, automatic transmission OIL SEAL RING (56X72X8)	1	

# CHART 02

## Input Shaft & Main Shaft

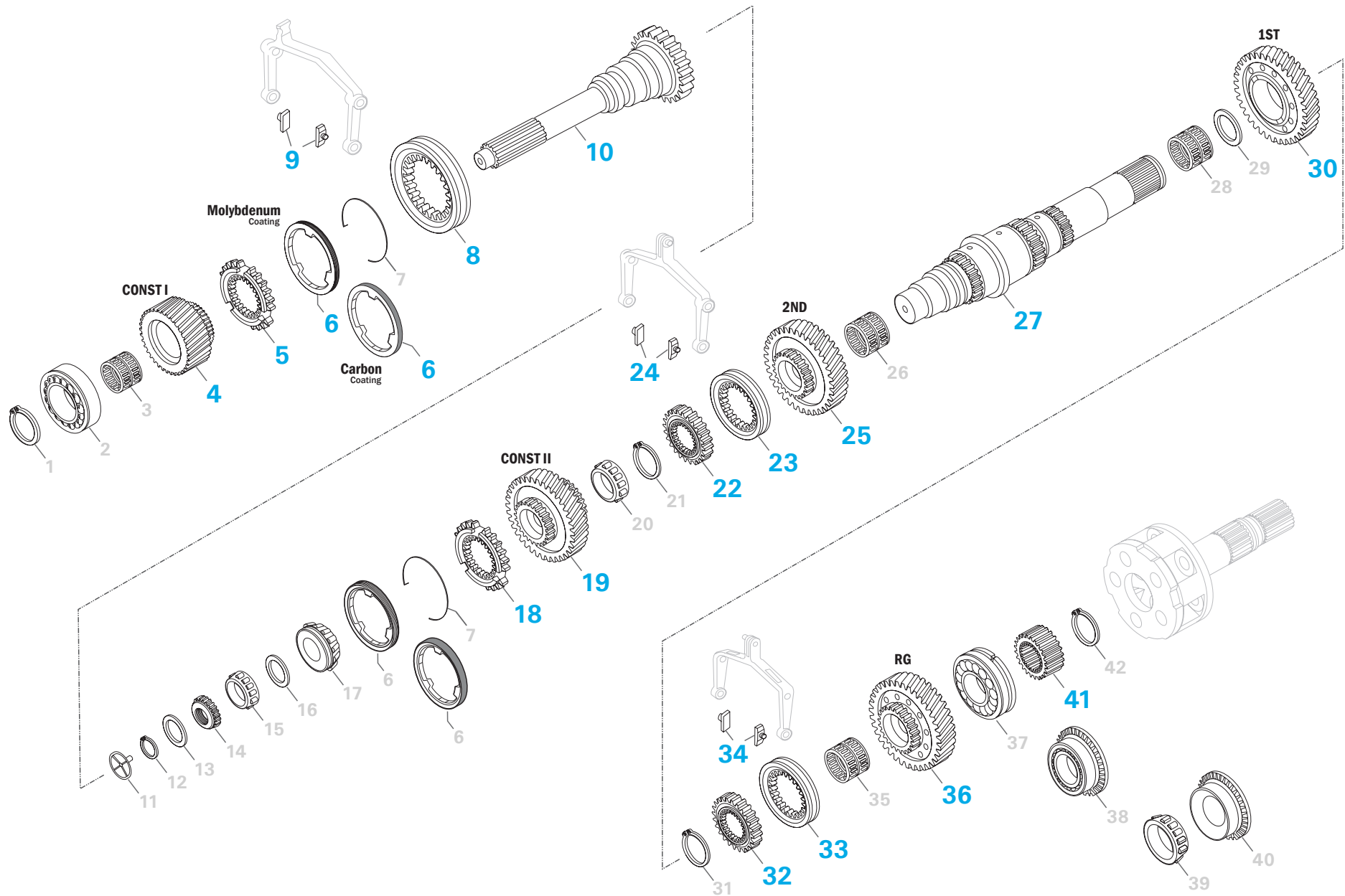


FIG.	G211-12	G281-12	G330-12	ZF	Mercedes*	Description	Qty	Notes
4				0073.301.232	930 262 1717	Gear, main shaft (40T.)	1	
5				0073.301.188	945 262 8234	Synchronizer Cone, speed change gear (66-44T.)	1	
6				0073.301.169	946 262 6137	Synchronizer Ring, manual transmission (MOLYBDENUM)	2	
6				0073.301.169	947 260 1945	Synchronizer Ring, manual transmission (CARBON FIBER)	2	Carbonium
8				0073.301.186	945 262 6523	Gearshift Sleeve, manual transmission (66T.)	1	
9				0073.301.208	947 265 0349	Synchronizer Body, manual transmission	2	
10				0073.301.236	930 262 0403	Transmission Input Shaft, manual transmission (66T.)	1	
18				0073.301.239	930 262 0234	Synchronizer Body, manual transmission	1	
19				0073.301.240	930 262 3617	Gear, countershaft (31T.)	1	
22				0073.301.241	930 262 0835	Synchronizer Body, manual transmission	1	
23				0073.301.221	930 262 0123	Gearshift Sleeve, manual transmission	1	
24				0073.301.207	947 265 0449	Synchronizer Body, manual transmission	2	
25				0073.301.213	930 262 0112	2ND Gear, main shaft (38T.)	1	
27				0073.301.217	930 262 0805	Main Shaft, manual transmission	1	(Y)
30				0073.301.222	930 262 0511	1ST Gear, main shaft (41T.)	1	
32				0073.301.241	930 262 0835	Synchronizer Body, manual transmission	1	
33				0073.301.221	930 262 0123	Gearshift Sleeve, manual transmission	1	
34				0073.301.207	947 265 0449	Synchronizer Body, manual transmission	2	
36				0073.301.215	930 262 0133	Pulley, reverse gear (45T.)	1	(Y)(K)
41				0073.301.158	945 262 0909	Gear, main shaft (25-28T.)	1	(X)(Y)

(A) To be coupled together (Version with 3° 30' Conical Angle)

(B) To be coupled together (Version with 5° 00' Conical Angle)

\* For complete list of ex numbers please see: [aftermarket.zf.com/catalog](https://aftermarket.zf.com/catalog)

# CHART 03 CounterShaft, RG & PTO

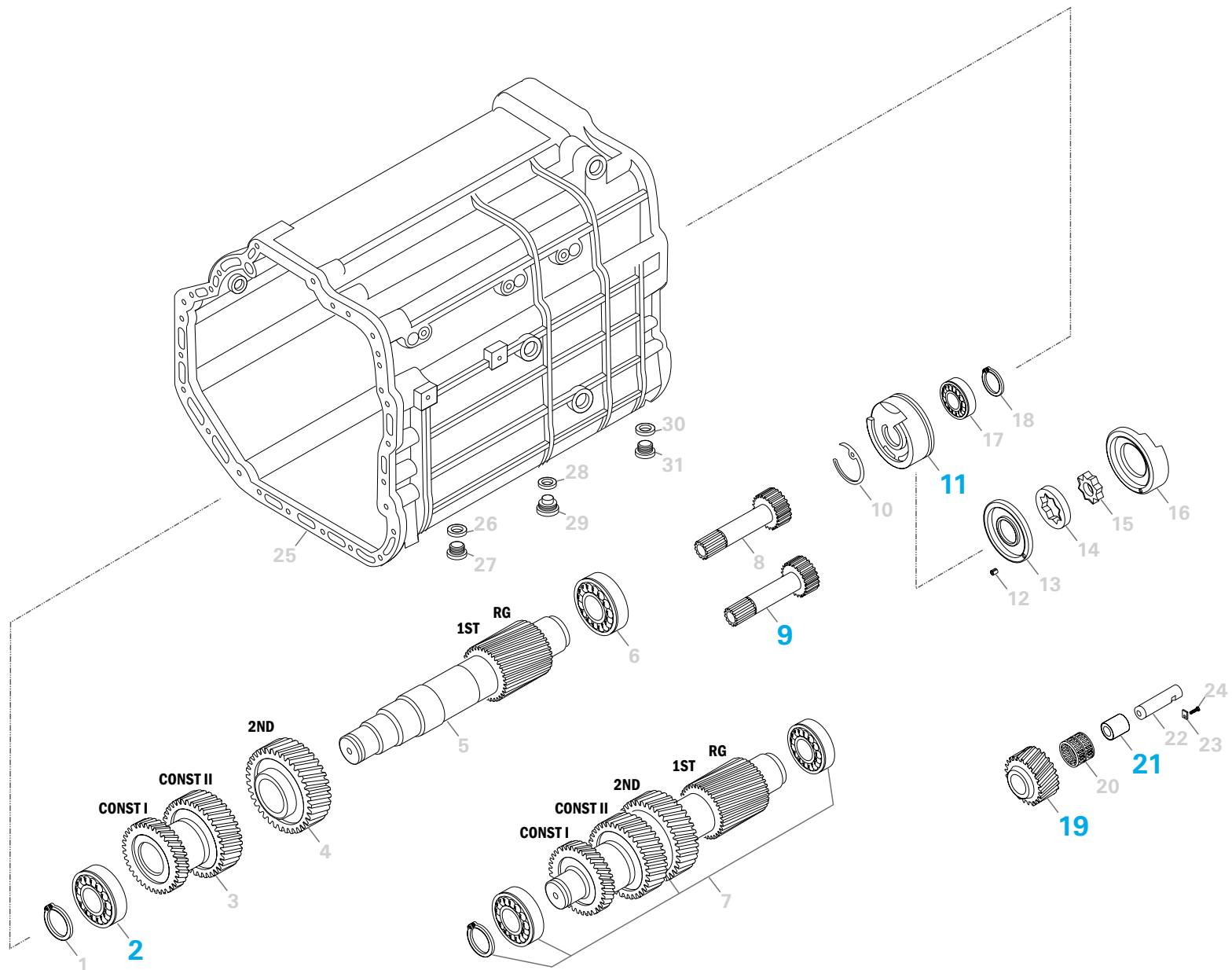


FIG.	G211-12	G281-12	G330-12	ZF	Mercedes*	Description	Qty	Notes
2				<b>0073.298.065</b>	<b>014 981 1405</b>	Repair Kit, automatic transmission TAPERED ROLLER BEARING (50,8X100X34)	1	
9				<b>0073.301.230</b>	<b>947 269 1010</b>	Shaft, power take-off (16-30T.)	1	With TELMA Retarder
11				<b>0073.301.233</b>	<b>389 260 0690</b>	Oil Pump, manual transmission	1	Old Type Assy
19				<b>0073.301.214</b>	<b>930 263 0031</b>	Pulley, reverse gear (24T.)	1	
21				<b>0073.301.166</b>	<b>389 263 0850</b>	Bush, selector-/shift rod	1	

# CHART 04

## Planetary Reduction Unit

**PLANETARY REPAIR KIT**

**11**

**4 PLANETARY ASSY + UNIVERSAL KIT FOR MODEL WITH AND W/ OUT RETARDER**

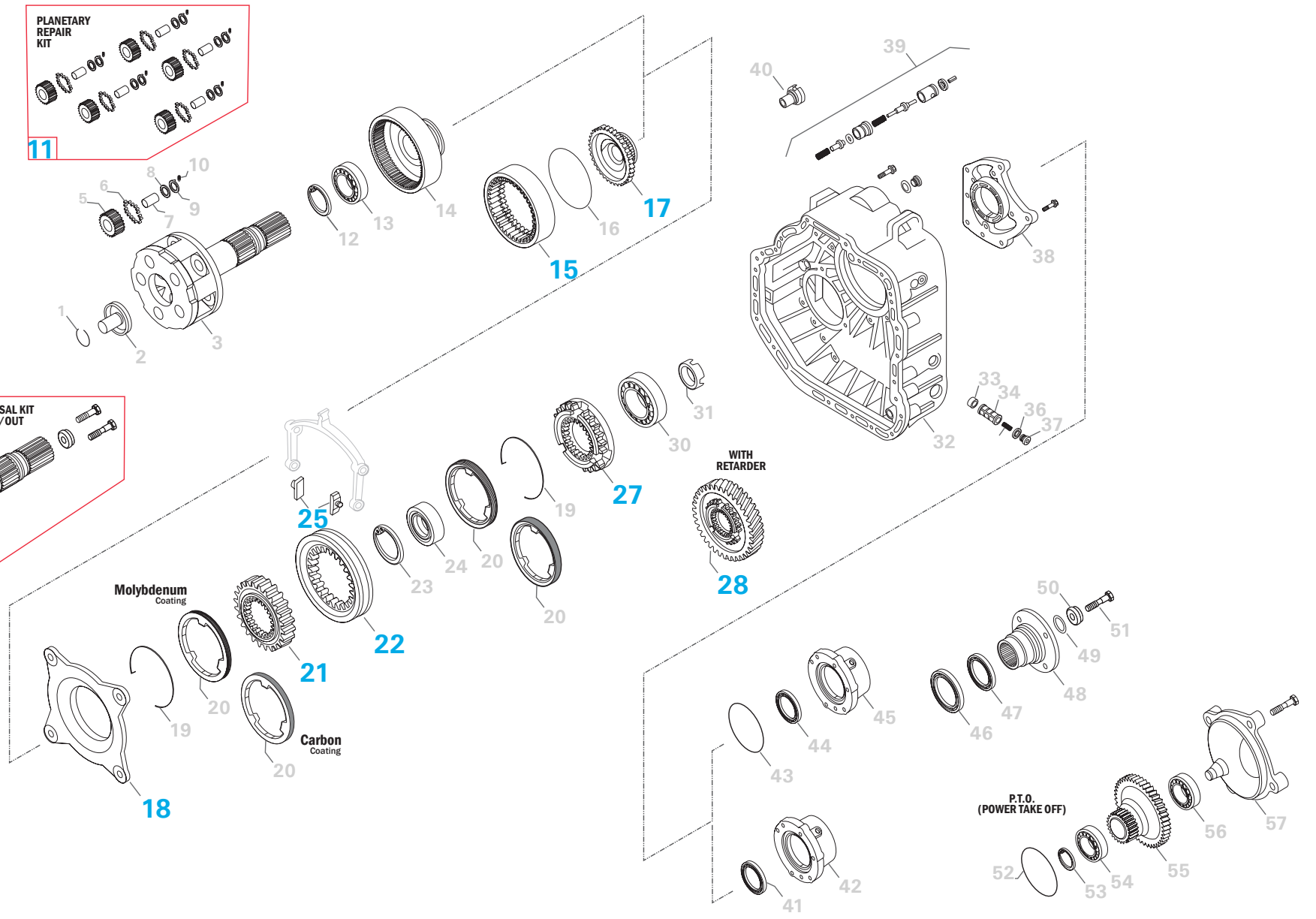




FIG.	G211-12	G281-12	G330-12	ZF	Mercedes*	Description	Qty	Notes
11				0073.301.164	946 260 0097	Repair Kit, automatic transmission Downstream group (28T.)	1	
15				0073.301.172	945 262 0808	Gearshift Sleeve, manual transmission (85T.)	1	
17				0073.301.171	930 262 0125	Synchronizer Body, manual transmission (85T.)	1	
18				0073.301.189	947 260 3036	Synchronizer Cone, speed change gear (73T.)	1	
21				0073.301.155	389 262 2035	Synchronizer Body, manual transmission (73T.)	1	
22				0073.301.175	945 262 6923	Gearshift Sleeve, manual transmission (73T.)	1	
25				0073.301.208	947 265 0349	Synchronizer Body, manual transmission	2	
27				0073.301.173	945 262 3834	Synchronizer Cone, speed change gear (73T.)	1	
28				0073.301.212	930 264 0320	Gear, main shaft (63-57-43T.)	1	

# CHART 05

## Forks, Reduction & Splitter

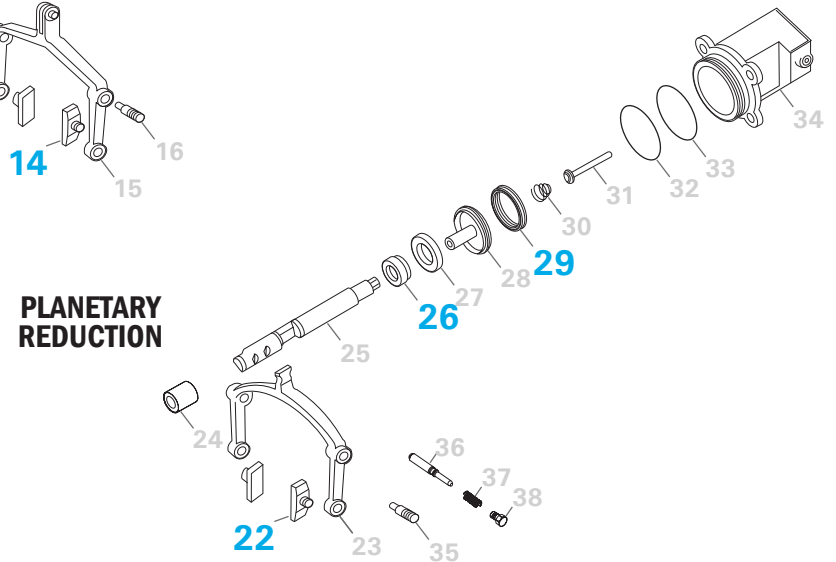
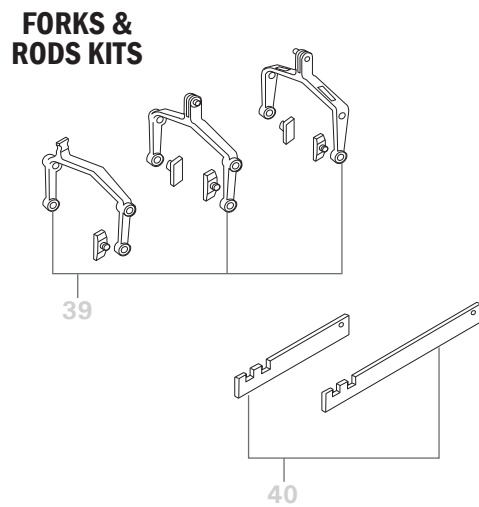
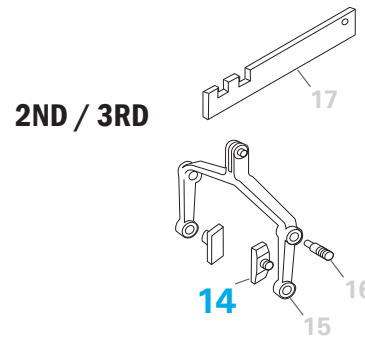
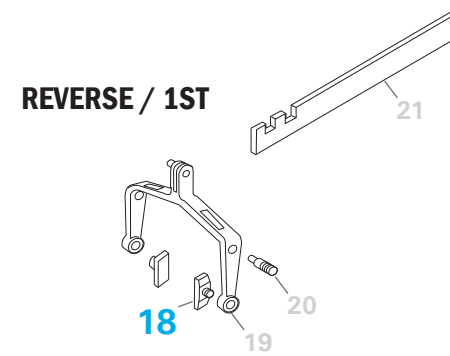
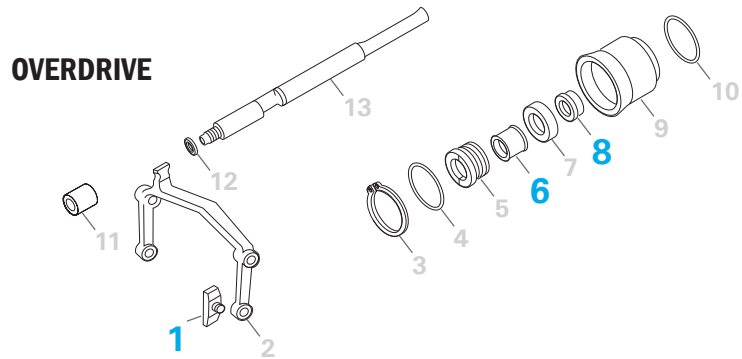


FIG.	G211-12	G281-12	G330-12	ZF	Mercedes*	Description	Qty	Notes
1				0073.301.208	947 265 0349	Synchronizer Body, manual transmission	2	
6				0073.298.067	006 997 6447	Repair Kit, automatic transmission OIL SEAL RING (41X48X11,5)	1	
8				0073.301.216	000 267 0197	Seal, trans. input shaft (manual transmission) (22X32X5/8)	1	
14				0073.301.207	947 265 0449	Synchronizer Body, manual transmission	2	
18				0073.301.207	947 265 0449	Synchronizer Body, manual transmission	2	
22				0073.301.208	947 265 0349	Synchronizer Body, manual transmission	2	
26				0073.301.216	000 267 0197	Seal, trans. input shaft (manual transmission) (22X32X5/8)	1	
29				0073.298.067	024 997 8347	Repair Kit, automatic transmission OIL SEAL RING (80X90X17)	1	

## ZF Friedrichshafen AG

ZF Aftermarket  
Obere Weiden 12  
97424 Schweinfurt  
Germany

Phone +49 9721 4756-0  
Fax +49 9721 4755000  
[aftermarket.zf.com](http://aftermarket.zf.com)



[twitter.com/zf\\_konzern](https://twitter.com/zf_konzern)  
[facebook.com/zfgroup.global](https://facebook.com/zfgroup.global)  
[youtube.com/zffriedrichshafenag](https://youtube.com/zffriedrichshafenag)

Legal disclaimer: The ZF Friedrichshafen AG products described above are specially designed for their specified intended use and may not be used for any other purpose. However, ZF makes neither an explicit nor an implied guarantee for the suitability of the products for certain intended uses neither explicitly agreed nor agreed in writing between ZF and its customers. The details in this flyer are, in particular, not binding with regard to the nature of the products. Only those written agreements made in the ordering process, in particular those concerning the nature of each product, shall be decisive in terms of ZF's contractual obligations. Proper assembly of the products is also a prerequisite for this guarantee. Details in advertising material are non-binding and cannot be consulted in determining the nature of the products. Subject to change without notice. Errors and omissions excepted. **For further information visit: [www.zf.com/dis](http://www.zf.com/dis)**